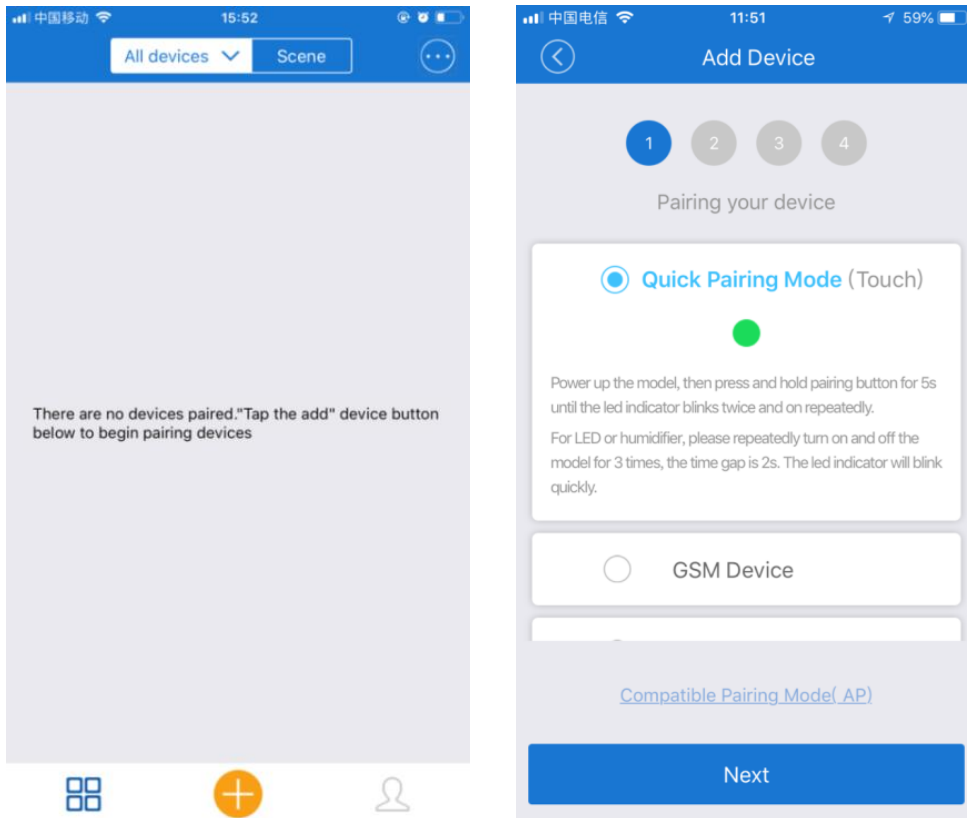


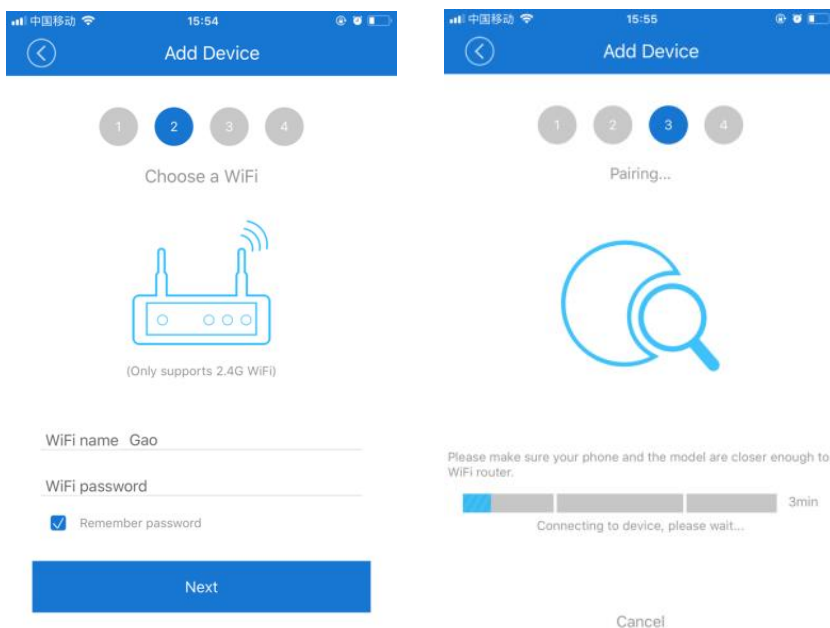
Operations of eWeLink APP

Add WiFi-RF Bridge to APP:

1. In a place where there is a wireless WIFI signal, turn on the WLAN function of the phone, select a wireless network and connect it.
2. After powering the WiFi-RF Bridge, use the fine needle to press the button inside the product hole for 5 seconds until the blue WIFI indicator light flashes rapidly (three times each time), and then release the button.
3. Open the eWeLink APP and click the icon "+" at the bottom of the "All devices" page to add devices. Select the default option "Quick Pairing Mode" and click "Next".

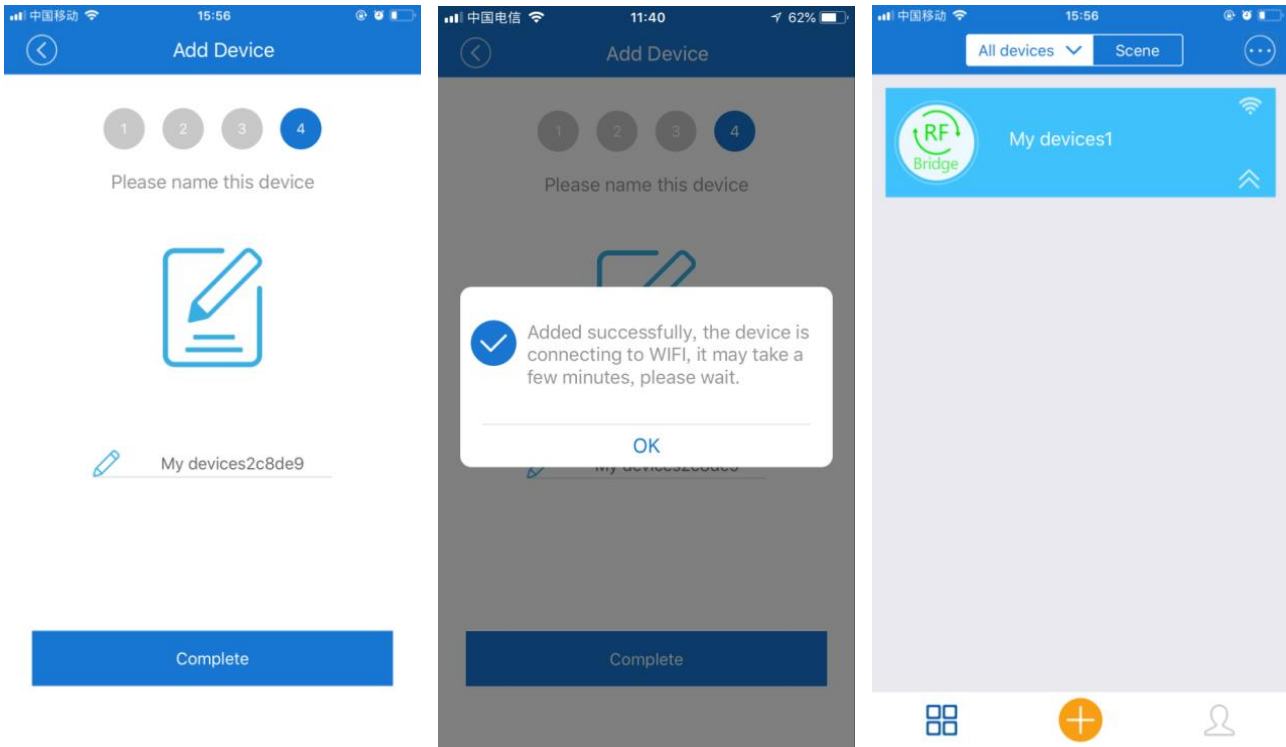


4. The APP will automatically display the name of the WIFI network to which your phone is connected. You need to enter the WIFI password and click "Next". The device will take 1 to 3 minutes to add to the app.



5. At this point, you can rename the device and click "Complete". After the device is added successfully, it will take 1 to 3 minutes to connect to the

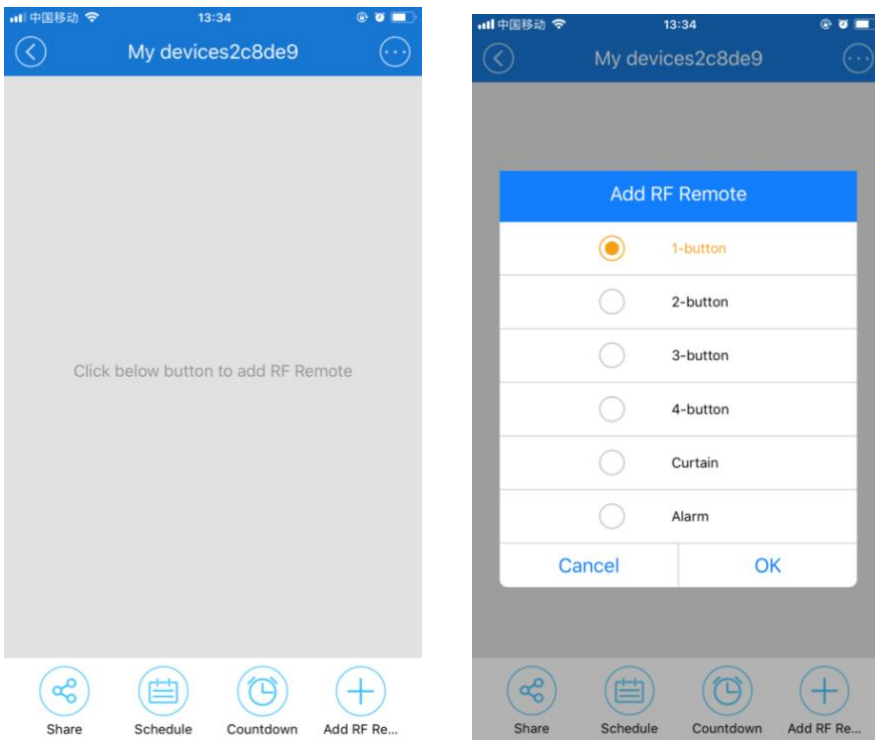
wireless router's WIFI signal, click "OK" and wait for it to complete the connection.



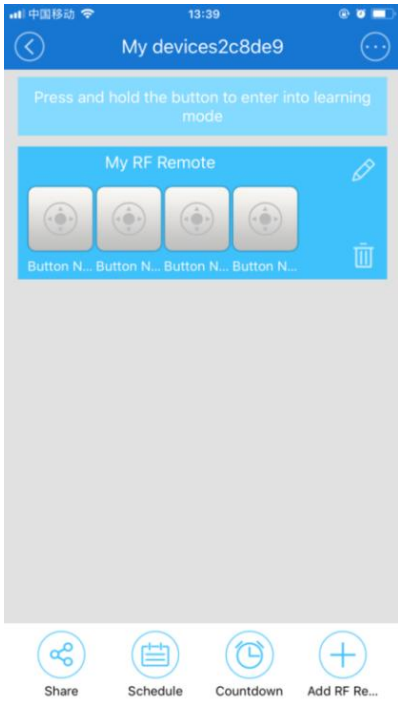
Add RF Device to WiFi-RF Bridge:

We can add the remote control of RF devices or wireless alarm to WiFi-RF Bridge. It only applies to RF devices with a fixed code or learning code type at a frequency of 433 MHz.

1. Click on the RF Bridge device on the "All devices" page to enter the operation page. Click the "Add RF Remote" button in the lower right corner of the screen and select the appropriate type, and then click the "OK" button to confirm. Each WiFi-RF Bridge can add up to 4 433Mhz RF devices, and can choose different types according to the needs, such as one-button remote, two-button remote, three-button remote, four-button remote, curtain or alarm.



2. After adding the RF device, you can also modify its name and the name of each button.



3. If you want to add RF remote controls, please prepare the RF remote control you want to learn. Firstly, press the button on the APP you want to learn until the WiFi-RF Bridge emits a "D" sound. Within one minute, press the corresponding button on the RF remote control to let it emit an RF signal. If the WiFi-RF Bridge emits a "D-D" sound which indicates that it is successfully to learn this button on the RF remote control. Continue the same operation to learn all other buttons.

4. If you want to add a wireless alarm, such as infrared detectors, door magnetic detectors, smoke detectors or water leak detectors, please prepare the wireless alarm you want to learn. Firstly, press the button on the APP you want to learn until the WiFi-RF Bridge emits a "D" sound. Within one minute, trigger the wireless alarm, and let it emit an RF alarm signal. If the WiFi-RF Bridge emits a "D-D" sound which indicates that it is successfully to learn the signal of this wireless alarm.

5. If you want to add a remote control with more than 4 buttons, such as the 12-button remote control CV-12, you can add 3 four-button remote controls to the APP, modify the names of the corresponding buttons, and operate each button to learn the corresponding button signals of the 12-button remote control. In this way, you can use the 3 four-button remote controls from the APP to simulate the 12-button remote control.



Operate RF Devices through the APP:

RF devices usually include an RF remote control, an RF receiver, and the connected devices. We have operated the APP to learn the signal of the RF remote control, so we can directly operate the RF receiver and its connected devices through the APP. It only applies to RF devices whose operating modes are self-locking (Toggle) and interlocking (Latched).

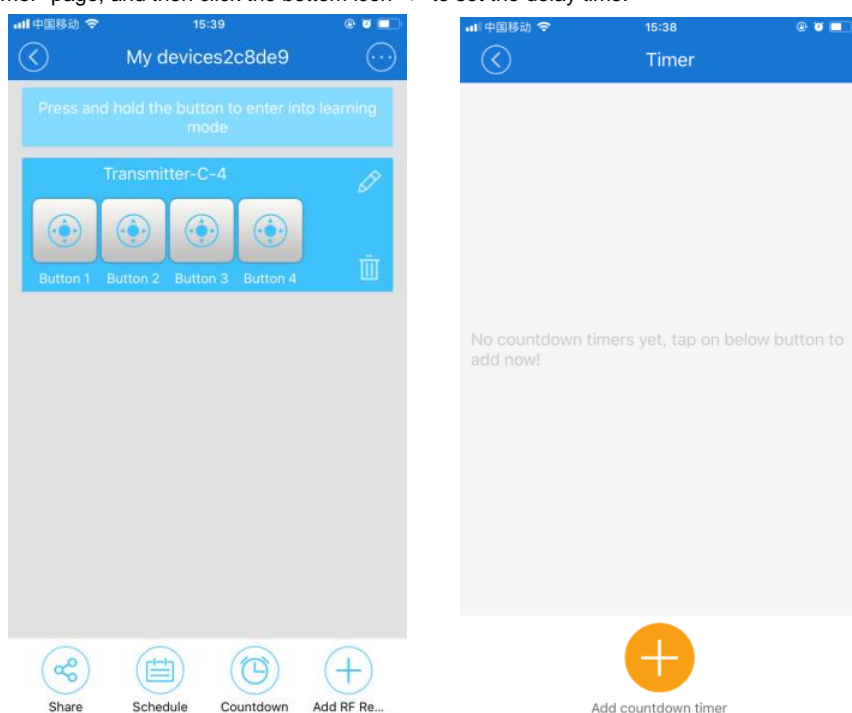
When you press the remote control button on the APP, the WiFi-RF Bridge will emit the corresponding RF signal to trigger the RF devices. The functions of the remote control button on the APP are equivalent to the functions of the button of the RF remote control you learned.

Note: Make the RF receiver and WiFi-RF Bridge within a reliable distance to ensure that the RF receiver can receive the RF signal from the WiFi-RF Bridge.

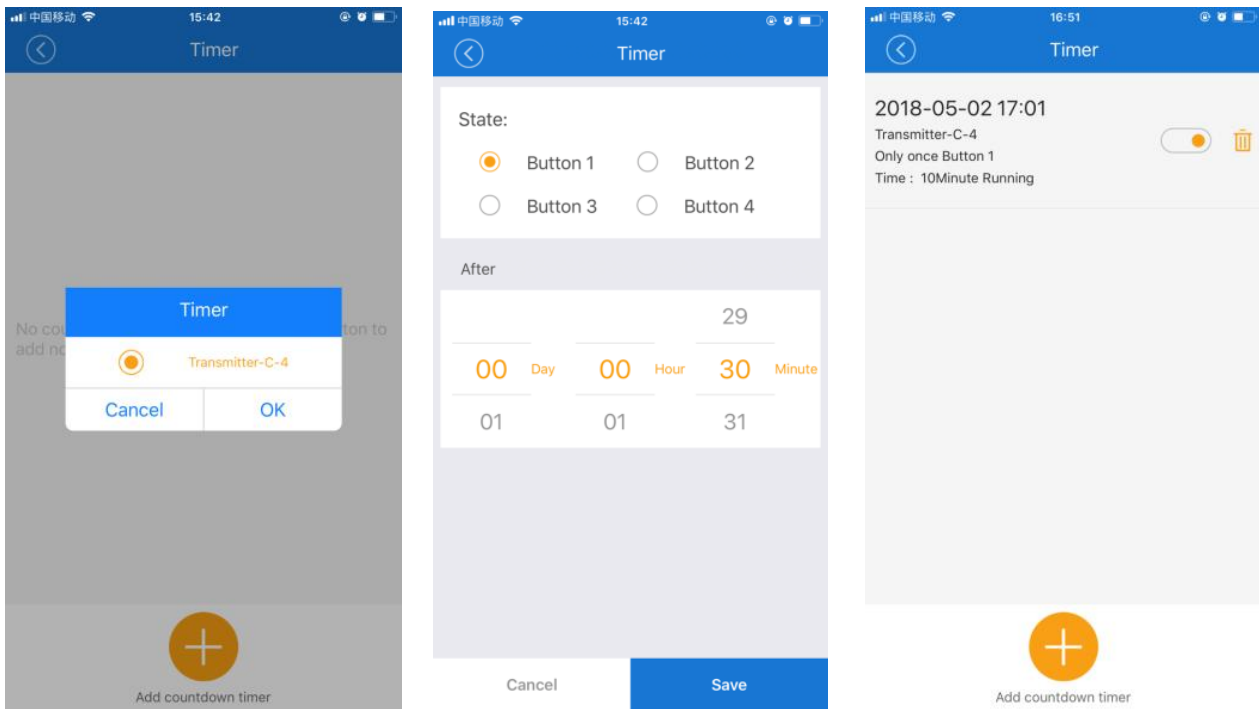
Delay Function:

The delay time can be accurate to the minutes, the shortest delay time is 1 minute, and the longest delay time is 24 hours. Up to 8 delay times can be set. If a button is set a delay time, the button will automatically emit an RF signal after the set delay time. If you set the first delay time of button A to 30 minutes at 8:05, then after 30 minutes, namely at 8:35, the button A will automatically emit an RF signal. If you set the second delay time of button A to 60 minutes at 8:10, then after 60 minutes, namely at 9:10, the button A will automatically emit an RF signal.

1. Click on the RF Bridge device on the "All devices" page to enter the operation page. Click the "Countdown" button under the screen to enter the "Timer" page, and then click the bottom icon "+" to set the delay time.



2. First select the corresponding remote control, select the corresponding button, and then set the corresponding delay time, and finally click the "Save" button.



3. Continue the same operation and set other delay times.

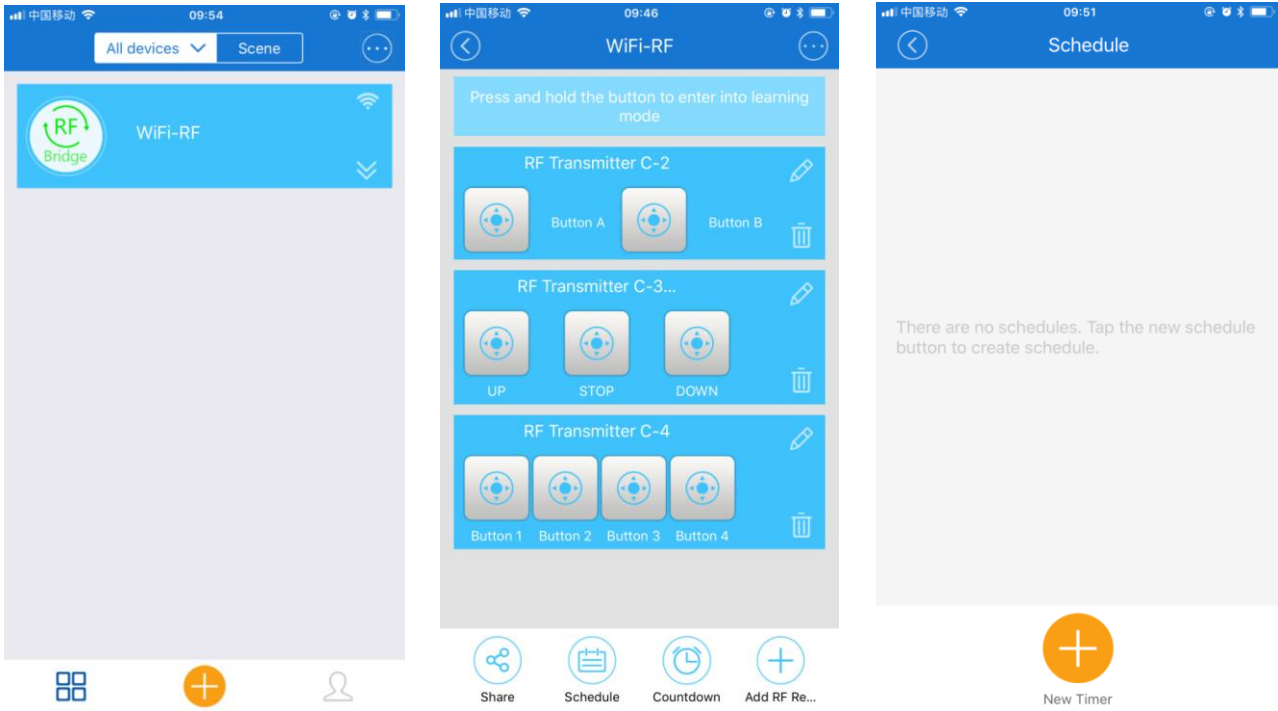
Timing Function::

The timing can be accurate to minutes. Up to 8 timers can be set. If a button is set for a timing time, this button will automatically emit an RF signal when the set time is reached. You can also set this button for single work or repeat work. If you set it to work for a single time, you need to set the year, month, and day. If you set it to repeat work, you need to set the week. If you set button A to work for a single time and set the timing time to be 9:30 on October 2nd, then button A will emit an RF signal automatically at 9:30 on October 2nd. If you set button A to repeat work and set the timing time to be 10:20 on Monday, then button A will emit an RF signal automatically at 10:20 every Monday.

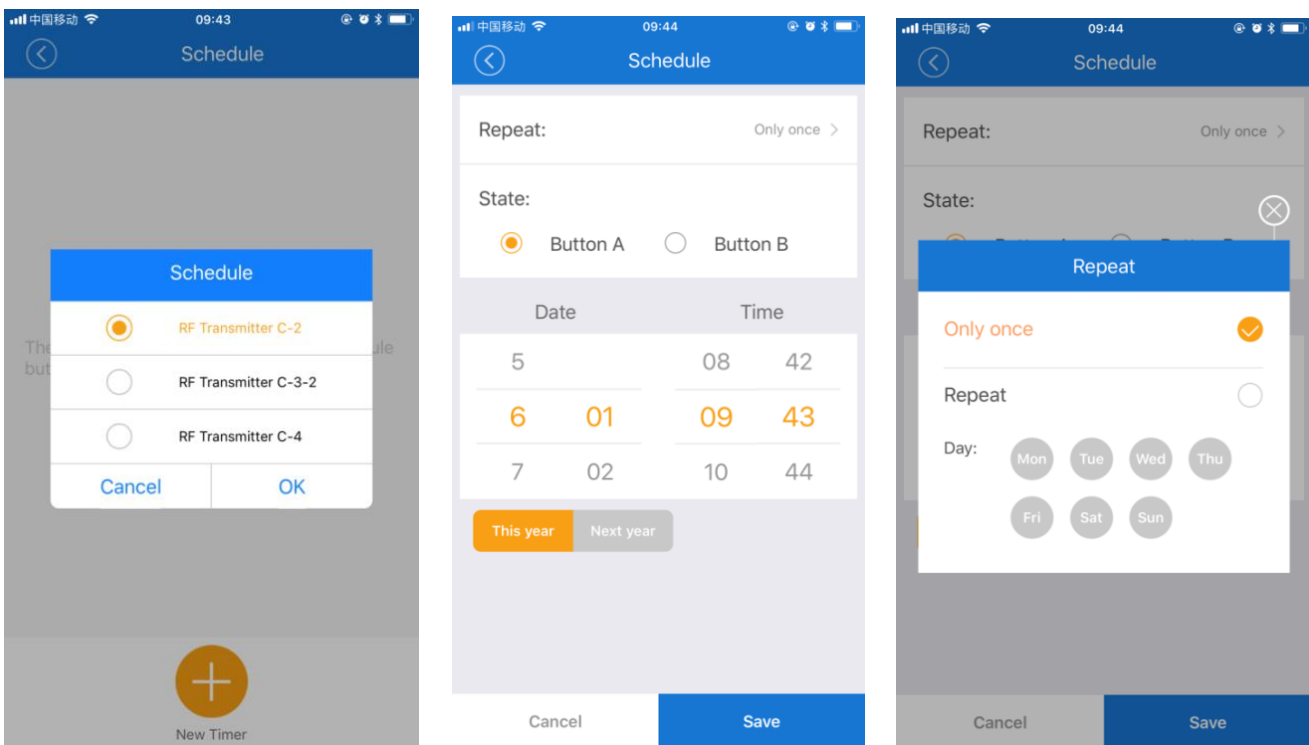
If the RF receiver is one-way and self-locking mode, the RF remote control has only one button, and you have added a one-button remote control to the APP. If you want the controlled device to be turned on at 9:00 every Monday and turned off at 18:00 every Friday. You first set the first timing time of the button on the APP, set this button to repeat work, and select Monday and time 9:00. And then set the second timing time, set this button to repeat work, and select Friday and time 18:00. In this way, this button will automatically emit an RF signal at 9:00 every Monday to turn on the controlled device, and will automatically emit an RF signal to turn off the controlled device at 18:00 every Friday.

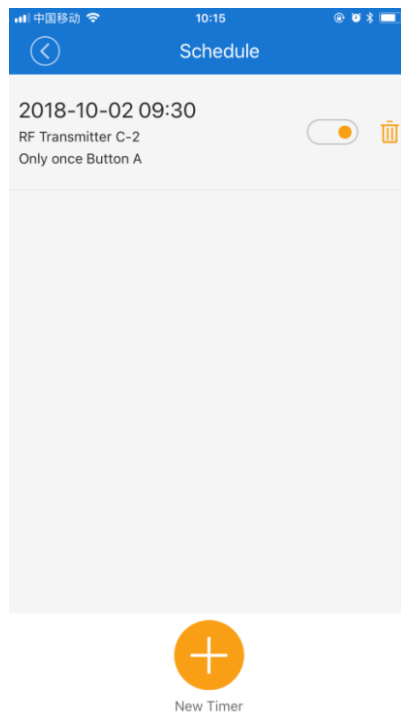
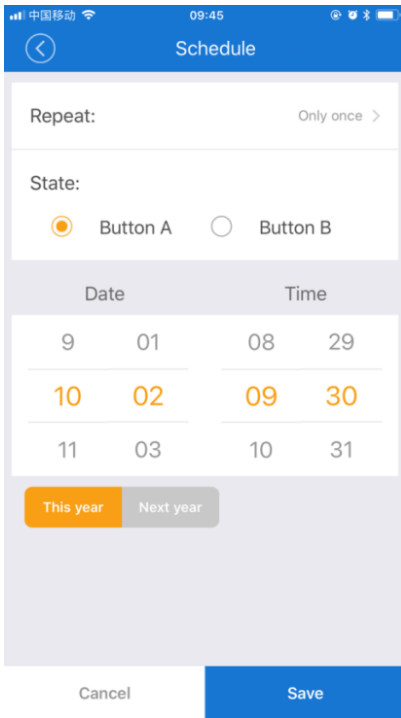
If the RF receiver is one-way and interlock mode, the RF remote control has two buttons, and you have added a two-button remote control to the APP. If you want the controlled device to be turned on at 9:30 on October 2 and turned off at 10:20 on October 3. You can set button A to work for a single time on the APP, and set its timing time to be 9:30 on October 2nd. Set button B to work for a single time, and set its timing time to be 10:20 on October 3rd. Then the button A will automatically emit an RF signal to turn on the controlled device at 9:30 on October 2. And the button B will automatically emit an RF signal to turn off the controlled device at 10:20 on October 3.

1. Click on the RF Bridge device on the "All devices" page to enter the operation page. Click the "Schedule" button below the screen to enter the "Schedule" page, and then click the bottom icon "+" to set the timing time.



2. First select the corresponding remote control, select the corresponding button, click the "Only once" button to set up single work or repeat work and then set the corresponding timing time, and finally click the "Save" button.



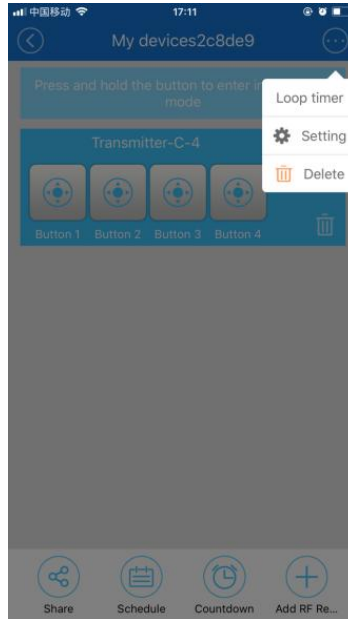


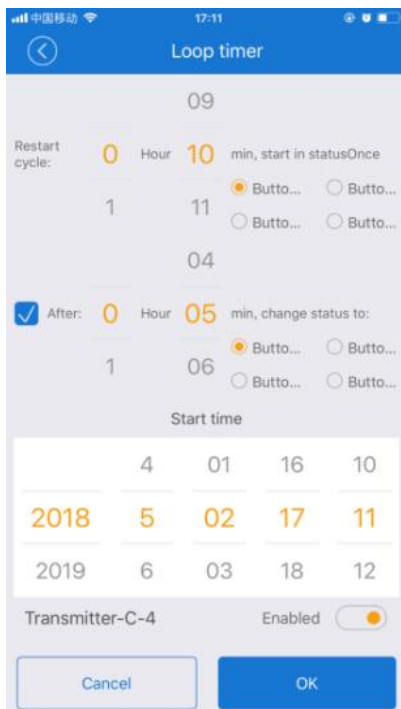
3. Continue the same operation and set other timing times.

Cycle Timing Function:

The cycle timing time can be accurate to minutes. Only a set of cycle timing time can be set.

1. Click on the RF Bridge device on the "All devices" page to enter the operation page. Click the button in the upper right corner of the screen, select "Loop timer", and select the corresponding remote control, and then click the "OK" button to enter the "Loop timer" page to set the cycle timing time.





The "Restart cycle" is the cycle interval time, the "After" is the working time of the equipment within each cycle, and the "Start time" is the cycle start time. The working time must be less than the cycle interval time. For example, we can set the oxygen pump of the fish tank to start working once every hour, and works for 20 minutes each time and automatic repeat cycle.

If the RF receiver is one-way and self-locking mode, the RF remote control has only one button, and you have added a one-button remote control to the APP. If you want the controlled device to start the cycle work at 9:00 on October 2, and each cycle interval is 1 hours and work for 20 minutes each time. You can set the "Restart cycle" to 1 hour, set the "After" to 20 minutes and set the "Start time" to 9:00 on October 2. In this way, the device will start cycle work at 9:00 on October 2. The button automatically emits an RF signal at 9:00 to turn on the controlled device, and automatically emits an RF signal at 9:20 to turn off the controlled device. Then the button automatically emits an RF signal at 10:00 to turn on the controlled device, and automatically emits an RF signal at 10:20 to turn off the controlled device. And it will continue to cycle.

If the RF receiver is one-way and interlock mode, the RF remote control has two buttons, and you have added a two-button remote control to the APP. If you want the controlled device to start the cycle work at 9:00, October 2, and each cycle interval is 1 hours and work for 20 minutes each time. You can set the "Restart cycle" to 1 hour and assign it to button A. And set the "After" to 20 minutes and assign it to button B. And set the "Start time" to 9:00 on October 2. In this way, the device will start cycle work at 9:00 on October 2. The button A automatically emits an RF signal at 9:00 to turn on the controlled device, and the button B automatically emits an RF signal at 9:20 to turn off the controlled device. Then the button A automatically emits an RF signal at 10:00 to turn on the controlled device, and the button B automatically emits an RF signal at 10:20 to turn off the controlled device. And it will continue to cycle.

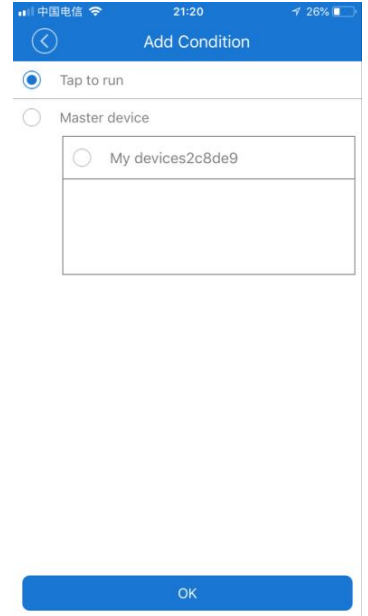
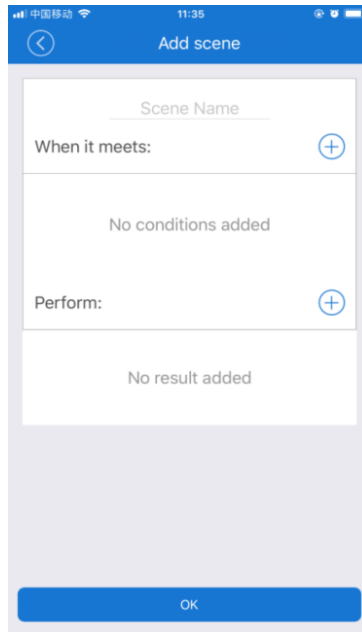
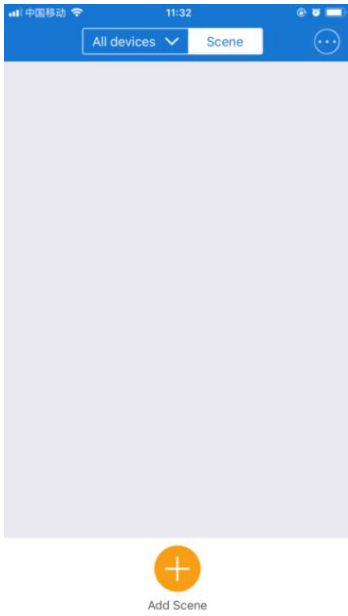
Scene Settings:

Scene settings are divided into manually triggered scenes and automatically triggered scenes.

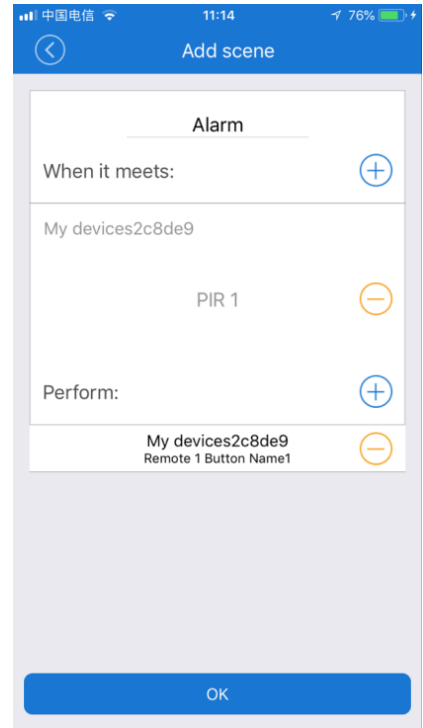
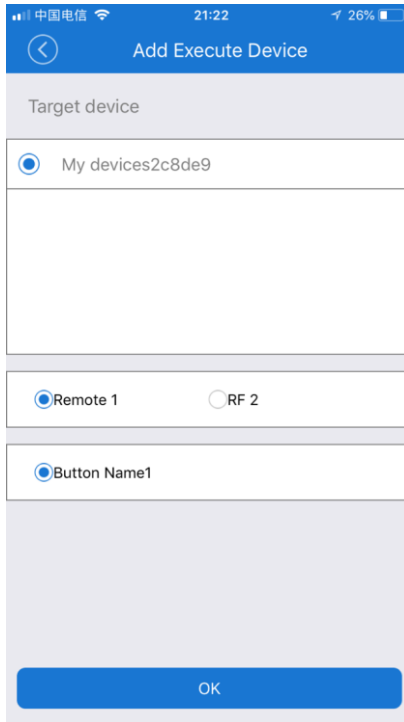
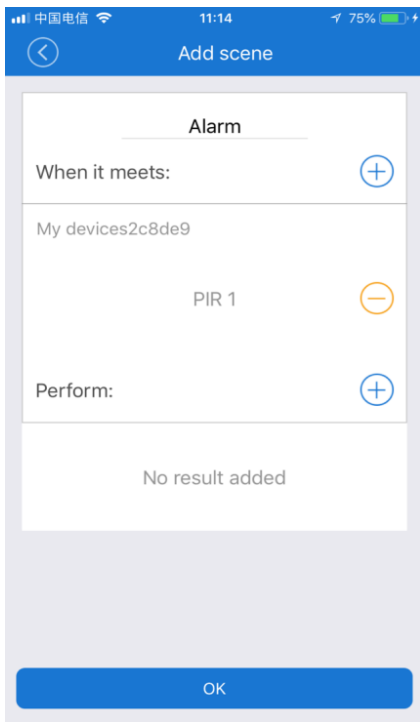
Manual triggering scenario allows you to manually turn on or off an RF device.

Automatic triggering scenario allows an RF device to automatically turn on or off when a wireless alarm or sensor is triggered. It can work automatically without mobile phone.

1. Click on the "Scene" button at the top of the "All devices" page to enter the scene settings page, and then click the bottom icon "+" to add the scene. In the "Add scene" page, you first enter the scene name, and then click the icon "+" behind "When it meets:" to enter the "Add Condition" page. If you want to set a manual triggering scenario, select "Tap to run" and click "OK" to save. If you want to set an automatic triggering scenario, select "Master device" and select the corresponding alarm or sensor, then click "OK" to save.



2. Click the icon "+" after "Perform:." to enter the "Add Execute Device" page. Select the corresponding remote control and button, then click "OK" to save.



Sharing Function:

Using the sharing function, we can share this device with other users to operate together and select the operating authority. The user to be shared needs to first register an account in the "eWeLink" APP and log in when it is shared. However, accounts in different countries do not support sharing.

Click on the "RF Bridge" device on the "All devices" page to enter the operation page. Click the button "Share" below the screen to enter the "Share" page, and then click on the bottom icon "+" to set sharing. After entering the sharing account and selecting the operation permission, click the "OK" button to send this share. When others receive the sharing prompt from the APP and click "OK", the device will be added to the shared user's APP, and the sharing user can operate the device.

