

86 Type AC220V LCD Touch Sensitive Wall Switch /Motor Controller for Electric Skylight / Blinds

Package Include:

- 1 x Wall switch: HCS-MT
- 1 x User manual

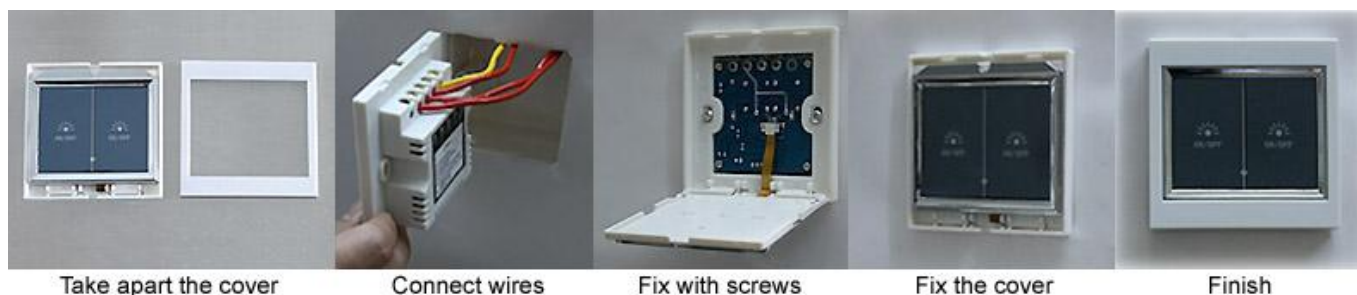
Application:

Control ac motor of winches, rolling doors / shutters, or electric windows, blinds, skylights or Other Appliances.

Specification:

- Model No.: HCS-MT
- Working Voltage: AC 100~250V (50/60Hz)
- Size: 86mm x 86mm x 35mm
- Static Current: <40uA (<0.008W)
- Maximum Power: 150W/110V; 300W/220V

Installation:

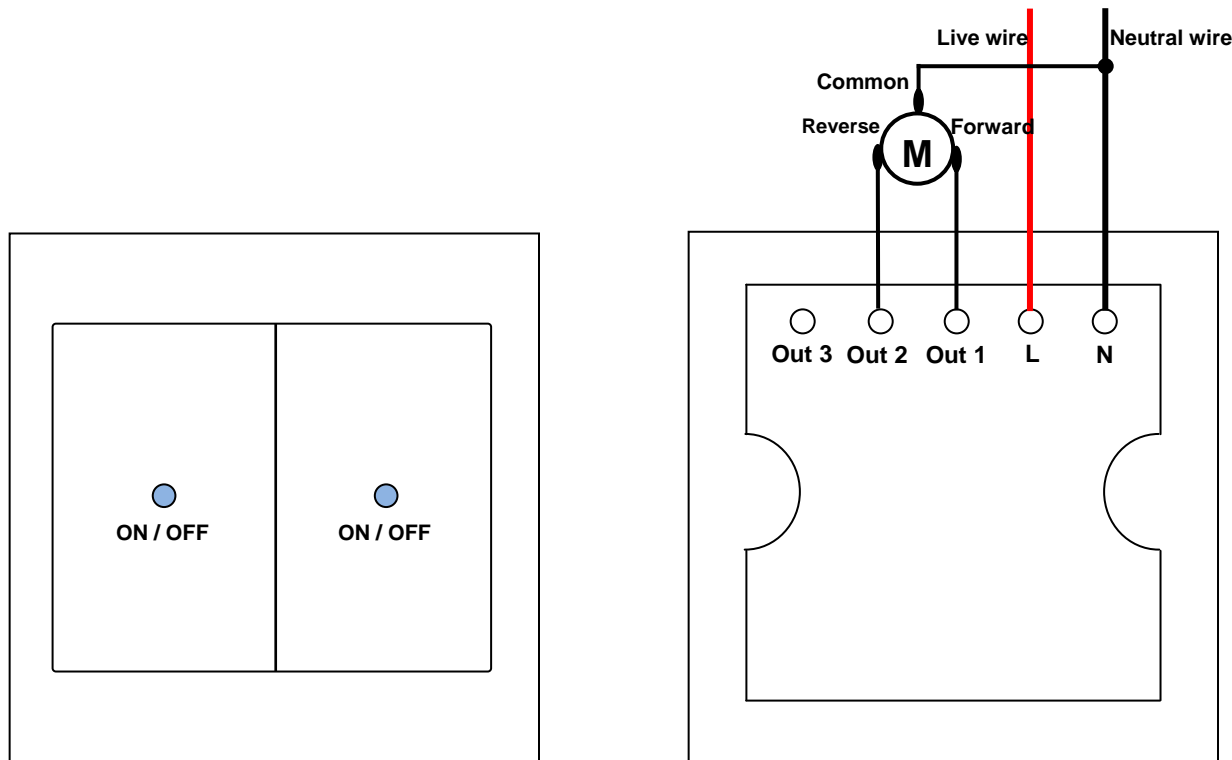


Wiring:

Connect the live wire of AC power supply to the "L", and connect the neutral wire of AC power supply to the "N".
 Connect the "Common" wire of the motor to the "N", connect the "Forward" wire of the motor to the "Out 1" and connect the "Reverse" wire of the motor to the "Out 2".
 You can exchange the "Forward" and the "Reverse" wires of the motor to change the rotating direction of motor.

Operation:

Press the switch icon on the left: Output of "Out 1" and "Common" directly power AC220V, motor rotates continuously in the positive direction.
 Press any switch icon again to stop the motor.
 Press the switch icon on the right: Output of "Out 2" and "Common" directly power AC220V, motor rotates continuously in the reversal direction.
 Press any switch icon again to stop the motor.



Front view

Back view

